



## NMB Splice-Sleeves® makes grouting work much easier and cleaner, Self Sealing Valve, Volume 2 of 3

...it's a grout inlet tube **Self Sealing Valve** with a built-in micro flap one-way valve.

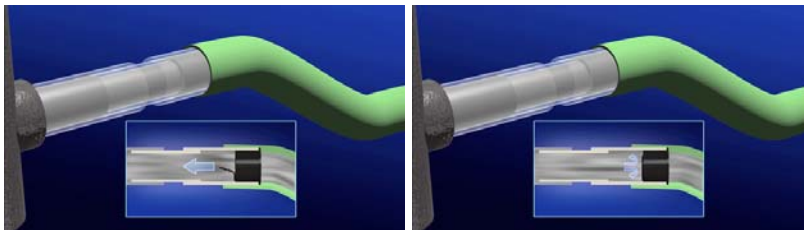


It allows **field operatives** to pump the sleeve full, then remove the nozzle and move straight to the next sleeve. The patented (application in process) valve stops the grout from flowing out.

No mucking about with two men, plugs and a big mess. The **Self Sealing Valve** helps **one man make a Quick,**

### Clean Fill.

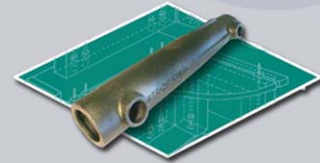
When the grout stiffens, just wash off and reuse on a large or odd-job.



**We've got the Gadgets**

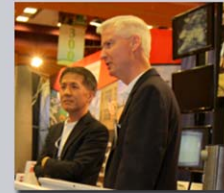
...but do try to bring them back this time will you!

Over **21 million** Splice-Sleeves® in use **worldwide**



### Splice Sleeve North America, Inc.

38777 West Six Mile Road, Suite 106  
Livonia, MI 48152  
[www.splicesleeve.com](http://www.splicesleeve.com)



#### Toshi Yamanishi President

Tel: 734.838.0420  
Fax: 734.838.0422  
[tyamanishi@splicesleeve.com](mailto:tyamanishi@splicesleeve.com)

#### Jim Schroder Technical/Marketing Dev.

Tel: 864.553.1344  
[jimschroder@bellsouth.net](mailto:jimschroder@bellsouth.net)  
1200 Woodruff Road A-3  
Greenville, SC 29607